

Measures of Child Well-Being in Utah 2016



Acknowledgements

Voices for Utah Children could not have produced this report without the assistance of numerous people, agencies and organizations. The publication was authored by Terry Haven, Deputy Director at Voices for Utah Children, with assistance from Sara Gunderson at Voices for Utah Children and the following agencies:

- Linda Prince - Utah Department of Human Services
- Mark Knoll - Utah Department of Workforce Services
- Jennifer Mattinson - Utah Department of Workforce Services
- Randy Raphael - Utah Office of Education
- Tracy Gruber - Utah Department of Workforce Services
- Jessica McClellan - Utah Department of Health



THE ANNIE E. CASEY FOUNDATION

The Masonic Foundation of Utah, Inc.

The R. Harold Burton Foundation

We thank our funders for their generous support for this report. The findings and conclusions in this report, however, are solely those of Voices for Utah Children, as are any errors or omissions.

Table of Contents

Introduction.....	4
Demographics.....	5
Health.....	9
Economics	13
Education.....	17
Sources and Definitions.....	21
KIDS COUNT Data Center Information.....	22



Introduction

When I think about what I wanted for my kids as they were growing up, and what I want for my grandchildren now, I probably think about the same things that you want for your family: love, friends, good health, a great education and the love of learning, and the opportunity to explore and follow their dreams. Every child in Utah deserves the opportunity to reach their full potential and fulfill their dreams. But some children in our state are hampered by poverty, poor health, and by starting school already behind their peers. Their destiny is often determined not by their abilities or dreams, but by their geography, economic circumstances, race, and other factors beyond their control.

These children are predominantly white in number, but as we begin to examine the figures by race and ethnicity we see that children of color are overrepresented in terms of percentages. For example, 56,000 white children live in poverty in Utah, more than any other race or ethnicity. But that represents only 8% of white children. In contrast, 31% of Hispanic children live in poverty. These 47,000 children, fewer in number than their white counterparts, are disproportionately represented in the data. The social and economic inequality among children of color affect the chance that they will enjoy all the opportunities that we want for all our children in Utah. That's why we have added statistics by race and ethnicity to the data book this year, so the conversation around race equity can begin.

This data book is designed to be used in three basic ways. First, the information is intended to guide policy decisions concerning children. By identifying positive and negative trends in the state, the book allows policymakers to ascertain where policies are effective and where changes need to be made. Second, the book is a resource. By consolidating and analyzing data relevant to children, the book offers current statistics for those applying for grants which aid children and families. Additionally, it provides reporters with ready access to the most recent data. Third, the book is intended to assist in the planning of community programs. By identifying problems, opportunities and trends, the information offers administrators a chance to evaluate their effectiveness and take a look at the road ahead.

This year's publication provides the latest available data on 30 different aspects of children's lives, from birth through adolescence. While children are our main focus, we recognize that children depend on families to ensure their well-being. We take a two-generation approach to improving outcomes for kids and know that kids do better in families that are stable, economically secure, and safe. The data book indicators are grouped into four interrelated categories:

 Demographics  Health  Economic Security  Education

For over 30 years Voices has been making sure that children's issues are heard: at the Capitol, in the media, and with other advocates. We raise our voices on behalf of children, informing policymakers that government can and should act to make sure all children have the opportunities that we want for our own children; that the hopes and dreams of all our children are not determined by the inequalities in our systems. This data book is a necessary resource tool for all individuals and agencies working with families, I urge you to use it in your efforts on behalf of children.

Terry Haven
Deputy Director

Demographics

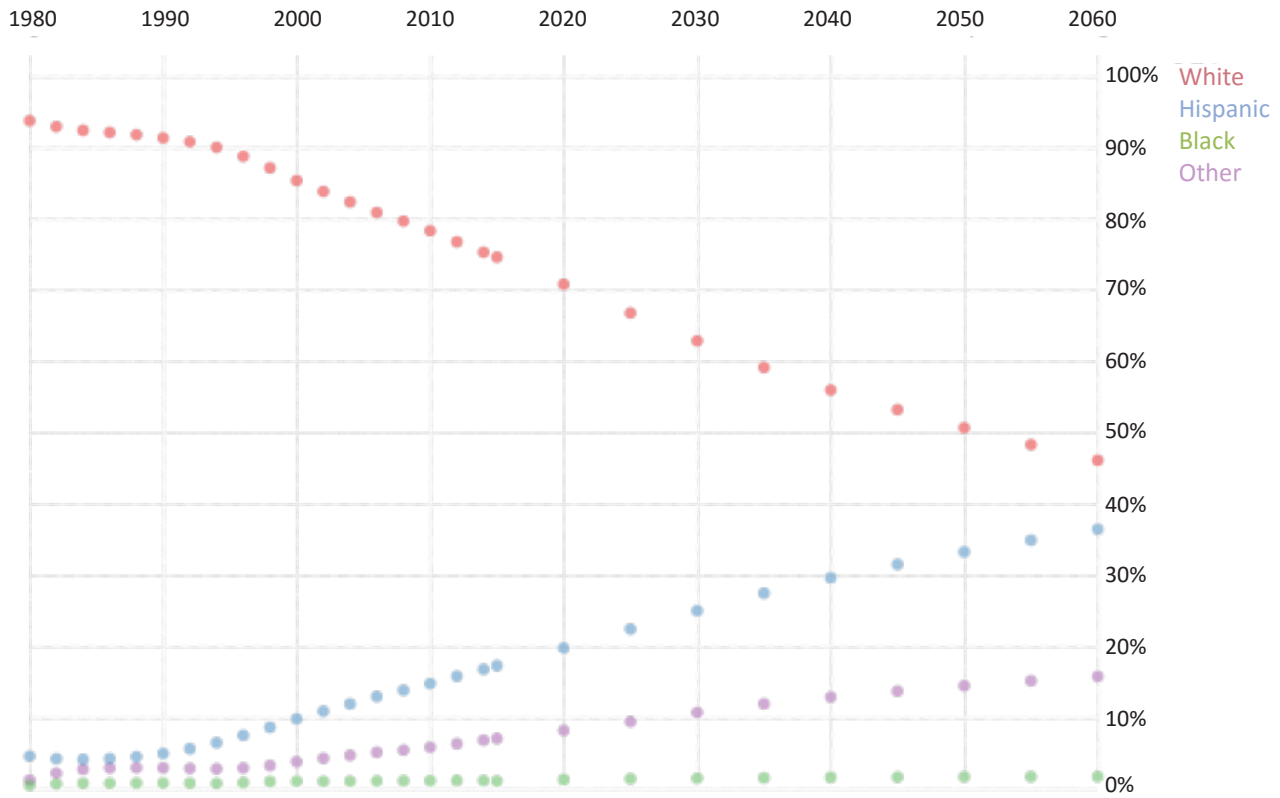


Demographics

	2009-2013		2010-2014	
	Number	Percent	Number	Percent
Total Population	2,813,673	100.0	2,858,111	100.0
Under 5 years	259,342	9.2	257,229	9.0
5-9 years	250,896	8.9	254,372	8.9
10-14 years	237,415	8.4	242,939	8.5
15-19 years	220,600	7.8	222,933	7.8
Total Households	886,770	100.0	896,194	100.0
Family Households	665,954	75.1	673,441	75.1
Married Couple Family	542,959	61.2	549,766	61.3
Male Householder, no wife present	36,740	4.1	37,610	4.2
Female Householder, no husband present	86,255	9.7	86,065	9.7
Race				
One Race	2,747,354	97.6	2,787,648	97.5
White	2,487,467	88.4	2,515,352	88.0
Black or African American	31,101	1.1	31,163	1.1
American Indian or Alaskan Native	31,696	1.1	31,999	1.1
Asian	58,150	2.1	60,631	2.1
Native Hawaiian and Other Pacific Islander	26,145	0.9	26,491	0.9
Some Other Race	112,795	4.0	122,012	4.3
Two or More Races	66,319	2.4	70,463	2.5
Hispanic or Latino, can be any race	368,552	13.1	379,454	13.3



Trending in Utah

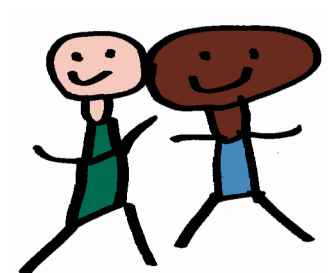


Source - "As Children Across America Go Back to School", New CAP-Brookings Interactive. <https://www.americanprogress.org/issues/progressive-movement/news/2016/09/07/143405/a-blending-american-youth/>

Racial Breakdown of Utah's Kids

Child Population by Race in Utah, 2015

	Number	Percent
American Indian and Alaskan Native	8,586	1.0
Asian	16,077	2.0
Black	10,586	1.0
Native Hawaiian and Other Pacific Islander	9,439	1.0
White	679,143	74.0
Two or More Races	30,816	3.0
Hispanic or Latino(a)	157,849	17.0



Data Source: Population Division, U.S. Census Bureau.

County Demographics

County	Total Population	Total Child Population, 0-19	Percent Child Population, 0-19	Total Households	Households with Children Under 18
Beaver	6,514	2,378	37	2,163	770
Box Elder	50,613	18,170	36	16,223	6,508
Cache	115,954	41,512	36	35,505	13,940
Carbon	21,118	6,483	31	7,834	2,237
Daggett	714	134	19	276	60
Davis	317,646	115,941	37	96,711	42,685
Duchesne	19,378	7,015	36	6,738	2,925
Emery	10,834	3,608	33	3,628	1,253
Garfield	5,105	1,475	29	1,815	435
Grand	9,348	2,225	24	3,822	1,062
Iron	46,725	16,120	35	15,135	5,295
Juab	10,349	4,046	39	3,066	1,370
Kane	7,221	1,885	26	2,925	685
Millard	12,582	4,379	35	4,210	1,583
Morgan	9,955	3,713	37	2,941	1,325
Piute	1,921	542	28	557	127
Rich	2,285	861	38	627	210
Salt Lake	1,063,670	331,865	31	348,110	125,125
San Juan	14,944	5,514	37	4,038	1,229
Sanpete	28,129	9,676	34	7,945	2,590
Sevier	20,812	7,014	34	7,112	2,607
Summit	37,877	11,060	29	13,425	5,026
Tooele	59,973	22,790	38	18,400	8,170
Uintah	34,576	12,517	36	11,048	4,604
Utah	540,425	212,387	39	145,469	69,847
Wasatch	25,550	9,224	36	7,752	3,559
Washington	144,844	46,350	32	47,905	15,567
Wayne	2,742	886	32	954	323
Weber	236,307	75,855	32	79,860	29,404
Utah State	2,858,111	977,474	34	896,197	350,521

Source: U.S. Census Bureau, 2010-2014 American Community Survey

Health

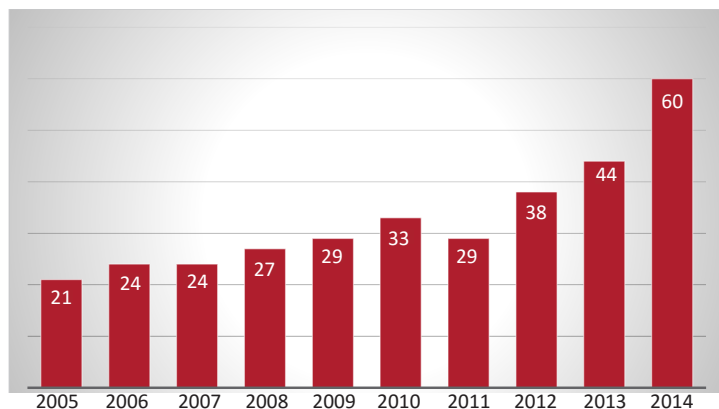


Health

	2013	2014
Receiving Prenatal Care, 2011-2013		
Percent	76.4	76.2
Number	38,906	39,005
Low Birth Weight Babies, 2009-2013 (2,500 grams)		
Percent	7.0	7.0
Number	3,578	3,578
Infant Mortality, 2009-2013 (per 1,000 live births)		
Rate	5.2	4.9
Number	262	251
Injury Deaths, 2009-2013 (per 100,000 ages 0-19)		
Rate	12.2	15.4
Number	114	145
Teen Birth Rate, 2009-2013 (per 1,000 females ages 15-17)		
Rate	8.6	7.9
Number	573	537
Suicide Rate, 2013 (per 100,000 ages 10-19)		
Rate	9.4	12.6
Number	44	60
Percent 2 Year Olds Immunized	86.1	82.0
Chlamydia Cases, 2013 (per 100,000, ages 15-19)		
Rate	896.2	860.0
Number	2,005	1,910
Abuse Data (7/1/13 - 7/1/14, per 1,000 children)		
Rate	11.2	9.8
Total number of victims	9,819	9,588
Uninsured Children 18 and under, 2013		
Percent	9.5	9.4
Number	84,891	84,768

Trending in Utah

Number of Teen Suicides in Utah - 2005 - 2014



Source: Utah Death Certificate Database, Office of Vital Records and Statistics, Utah Department of Health.



Racial Disparities in Health

	American Indian	Asian & Pac. Islander	Black	White	Hispanic
Teen Births, 15-19, per 1,000					
Utah	39	12	23	14	43
Nation	27	8	35	17	38
% Children w/o health insurance					
Utah	S	9	S	6	23
Nation	14	6	5	5	10
% Low birthweight babies					
Utah	9.3	8.9	10.6	6.7	7.3
Nation	7.6	8.1	12.8	7.0	7.1
Infant mortality, per 1,000					
Utah	S	S	S	4.6	6.8
Nation	8.0	3.2	11.0	4.8	5.2
% Women receiving late or no prenatal care					
Utah	7	6	9	2	6
Nation	11	6	10	4	7
Child & teen death rates, per 100,000					
Utah	S	S	S	27	29
Nation	25	13	34	23	19

Data Source: KIDS COUNT Data Center, <http://datacenter.kidscount.org>. U.S. Centers for Disease Control and Prevention (CDC), National Center for Health Statistics (NCHS). Population Reference Bureau analysis of data from the Centers for Disease Control (CDC) and Prevention, National Center for Health Statistics, 2014. S – NCHS reporting standards not met.

County Health Data

County	Percent Receiving Prenatal Care 2014	Percent Low Birth Weight Babies 2002-2014	Percent Exempted from Immunizations, Kindergarten, Fall 2015	Teen Birth Rates per 1,000 females, 15-17 2010-2014	Percent Uninsured Children Under 18 2010-2014
Beaver	69.8	7.7	3.7	16.8	5.9
Box Elder	81.8	6.1	3.5	11.5	5.8
Cache	85.7	6.4	2.4	8.6	7.2
Carbon	72.5	10.2	2.7	8.5	8.9
Daggett	66.7	*	0.0	*	*
Davis	81.5	6.6	4.5	6.1	5.3
Duchesne	66.5	7.0	5.9	16.6	11.2
Emery	69.0	8.5	4.4	8.3	9.0
Garfield	83.6	7.0	6.7	7.0	15.2
Grand	70.0	9.6	2.0	16.5	26.6
Iron	79.0	7.2	5.1	13.3	15.4
Juab	73.1	6.2	3.0	9.5	15.2
Kane	84.0	7.2	10.3	*	18.2
Millard	72.6	6.5	4.5	9.5	12.1
Morgan	82.4	8.3	4.9	*	7.1
Piute	75.0	9.5	5.6	*	19.5
Rich	74.4	*	0.0	*	10.2
Salt Lake	75.9	7.5	3.1	13.3	11.7
San Juan	59.3	8.0	1.7	20.1	19.9
Sanpete	70.0	6.7	8.3	8.7	15.6
Sevier	79.5	9.1	4.2	11.5	14.6
Summit	69.8	9.0	4.7	7.2	8.4
Tooele	74.3	7.7	2.5	11.3	8.2
Uintah	65.3	7.7	4.6	14.4	11.4
Utah	75.3	6.1	7.4	6.4	8.9
Wasatch	68.8	6.6	5.8	11.2	12.1
Washington	64.2	6.4	7.4	7.9	16.0
Wayne	74.2	9.2	8.1	*	17.3
Weber	79.9	7.3	2.0	14.4	10.5
Utah State	76.2	7.0	4.4	10.3	10.2

* Data suppressed due to small numbers which makes the relative error greater than 30%.

Economics



Economics

Living Below the Poverty Line - (\$24,008 a year for a family of 4 in 2014)

Total Population in Poverty - Number	2013	2014
All Persons	360,119	341,587
Under 18	129,261	120,155
5-17	85,745	81,347
under 5	40,153	35,687

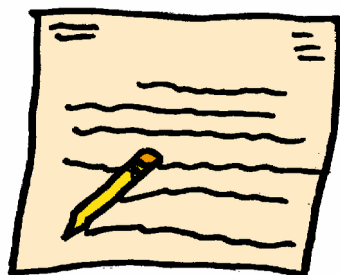
Total Population in Poverty - Percent		
All Persons	12.6	11.8
Under 18	14.6	13.4
5-17	13.6	12.7
under 5	16.1	14.4

Median Household Income	\$59,715	\$60,943
-------------------------	----------	----------

Intergenerational Poverty	Dec. 2013	Dec. 2014
Number Intergenerational Poverty - Adults	35,816	30,960
Number Intergenerational Poverty - Children	50,658	48,116

Participation in Work Support Programs	Dec. 2014	Dec. 2015
Households Receiving Food Stamps	90,772	88,421
Households Receiving TANF	4,357	4,163

Unemployment Rates	Dec. 2014	Dec. 2015
Number Unemployed	51,263	49,976
Percent Unemployed	3.6	3.4



Trending in Utah

Since 2010 the percentage of children living in households where more than 30% of their income is allocated to housing expenses has dropped from 37% to 28%.



The bad news is that while Hispanic children also saw a decrease in the percentage of children paying more than 30% for housing they are still twice as likely as their non-Hispanic white counterparts to do so.

Non-Hispanic white children with a high housing cost burden decreased from 33% in 2010 to 21% in 2014. Hispanic children fell from 53% to 44% during the same time period.

Definitions: Children living in households with a high housing cost burden is the percent of children under age 18 who live in households where more than 30 percent of monthly household pretax income is spent on housing-related expenses, including rent, mortgage payments, taxes and insurance by the child's race and ethnicity.

Data Source: Kids Count Data Center datacenter.kidscount.org/. Population Reference Bureau, Analysis of data from the U.S. Census Bureau's American Community Survey, 2005 through 2014.

Racial Disparities in Economics

	Non-Hispanic White	Hispanic or Latino
Poverty		
Number of Children below 200% of poverty, 2014	200,000	95,000
Percent of Children below 200% of poverty, 2014	30	63
Number of Children below 100% of poverty, 2014	56,000	47,000
Percent of Children below 100% of poverty, 2014	8	31
Percent of Children living in families where no parent has full-time, year round employment	16	32

Data Source: Kids Count Data Center datacenter.kidscount.org/.

County Economic Data

County	Percent Total Population in Poverty, 2014	Percent Child Population in Poverty, 2014	Median Household Income, 2014	Percent Child Population 5-17, in Poverty, 2014	Households Receiving Food Stamps December 2015
Beaver	9.8	13.0	50,818	12.0	201
Box Elder	11.6	15.1	56,313	13.6	1,618
Cache	14.2	12.8	51,735	12.3	3,081
Carbon	15.7	19.0	47,340	18.1	1,326
Daggett	8.3	10.9	53,006	10.0	11
Davis	7.2	8.3	70,797	8.1	6,819
Duchesne	11.6	12.2	61,976	11.8	896
Emery	12.9	17.2	49,709	15.1	367
Garfield	12.2	18.0	45,666	16.7	122
Grand	15.0	21.8	43,344	21.3	469
Iron	22.1	25.6	43,615	22.1	2,204
Juab	11.4	15.3	55,204	14.6	317
Kane	11.8	16.7	48,456	15.9	204
Millard	12.9	18.3	52,623	17.3	390
Morgan	4.6	4.8	82,597	4.5	74
Piute	18.7	34.1	37,730	28.0	58
Rich	10.3	14.1	56,772	13.1	45
Salt Lake	11.9	15.1	62,536	14.4	36,993
San Juan	29.2	30.5	40,590	26.9	1,246
Sanpete	17.1	19.8	44,644	18.9	829
Sevier	12.1	17.0	48,622	14.6	1,027
Summit	6.8	7.9	92,560	7.3	312
Tooele	8.1	10.5	64,193	9.7	2,094
Uintah	9.6	11.3	65,489	10.9	1,268
Utah	12.6	11.0	60,957	10.0	10,933
Wasatch	7.1	9.8	65,207	9.1	366
Washington	12.9	18.1	50,169	17.3	4,806
Wayne	14.1	22.9	42,366	21.6	98
Weber	12.3	15.4	59,293	14.3	10,240
Utah State	11.8	13.4	60,943	12.7	88,421

* Data suppressed if number equal to 10 or less

Education



Education

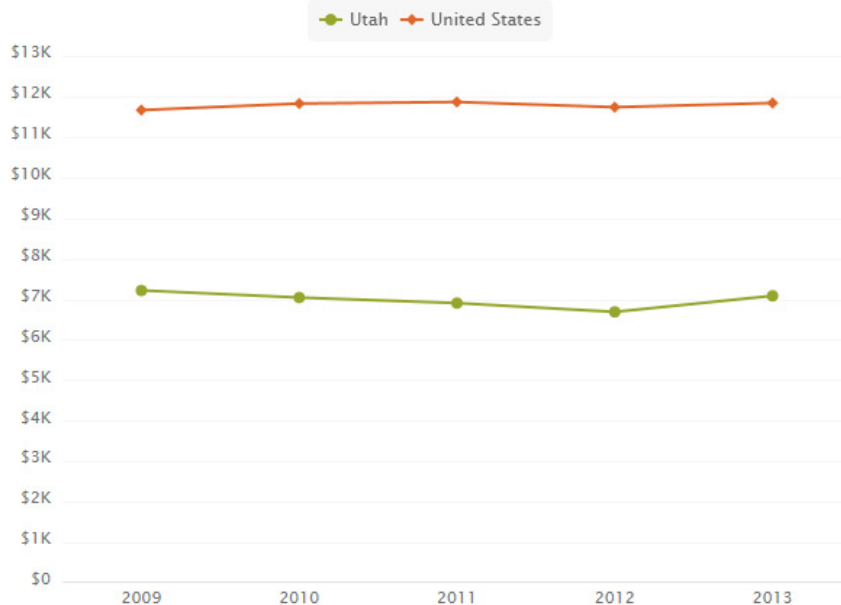
Utah Public School Statistics - K - 12

	October 2014	October 2015
Fall Enrollment	610,961	621,062
Number of Free/Reduced Lunch Participants	233,743	242,691
Percent Free/Reduced Lunch Participants	37.0	37.8
	Fall 2014	Fall 2015
Student/Teacher Ratio	25.3	25.6
Percent Students Chronically Absent	11.6	10.8
Percent Children ages 3 to 4 Not Enrolled in Preschool, 2011-2013	60.0	59.0
	SY 2014-2015	SY 2015-2016
SAGE Testing- Language Arts Percent Proficient		
All Students	44.1	44.1
Low Income Students	28.5	28.8
SAGE Testing- Math Percent Proficient		
All Students	44.6	46.5
Low Income Students	29.4	30.7
SAGE Testing - Science Percent Proficient		
All Students	46.8	48.7
Low Income Students	31.0	32.4



Trending in Utah

Per Pupil Expenditures Adjusted for Regional Cost Differences



Definitions: Per-pupil educational expenditures adjusted for regional cost differences using the National Center for Education Statistics (NCES) Geographic Cost of Education Index. Beginning with 2006 data, the NCES Comparable Wage Index is used. Also, beginning with 2005 data, the U.S. average is calculated using an average of the states' averages. For years prior, the U.S. average is calculated using a grand mean; which is the mean of the means of several state subsamples.

Data Source: National Center for Education Statistics, Revenues and Expenditures for Public Elementary and Secondary Education accessed through <http://www.edcounts.org/createtable/step1.php>.

Racial Disparities in Education

	Non-Hispanic White	Hispanic or Latino	American Indian	Pacific Islander	Asian	Black
Education Outcomes						
% High School Students Not Graduating on Time, 2012-13	17	29	38	18	*	33
% Fourth Graders Who Are Chronically Absent, 2013	23	27	S	16	*	S
% Young Children Not in School, 2010-2014	57	67	S	S	*	S
Education Testing						
SAGE Testing- Language Arts Percent Proficient, 2015-16	49.6	23.5	18.5	25.6	50.6	21.8
SAGE Testing- Math Percent Proficient, 2015-16	52.7	23.4	19.0	26.5	54.2	20.4
SAGE Testing- Science Percent Proficient, 2015-16	55.5	23.9	20.3	23.4	50.7	21.3

Data Source for Education Outcomes: The Annie E. Casey Foundation, KIDS COUNT Data Center, datacenter.kidscount.org

S - Data have been suppressed by NCES due to small sample size and/or small population size.

* - This dataset combines Asian and Pacific Islander into one category.

Data Source for Education Testing: Utah State Board of Education.

County Education Data

County	Fall Enrollment, October 2015	Percent Free/Reduced Lunch Participants, October 2015	Percent Students Chronically Absent 2015	Pupil Teacher Ratio 2015
Beaver	1,533	45	17.4	21.4
Box Elder	11,947	39	12.4	25.0
Cache	24,793	40	9.0	27.5
Carbon	3,874	48	15.5	23.3
Daggett	173	29	19.0	9.6
Davis	77,154	23	9.4	27.7
Duchesne	5,210	35	16.7	22.1
Emery	2,347	46	21.7	18.1
Garfield	936	46	16.8	16.9
Grand	1,598	50	13.7	18.5
Iron	9,564	49	10.6	23.2
Juab	2,607	37	13.0	21.9
Kane	1,203	47	14.7	17.1
Millard	2,857	54	5.8	20.1
Morgan	2,834	17	6.9	25.3
Piute	302	74	4.0	12.1
Rich	484	41	12.3	15.6
Salt Lake	206,307	42	9.7	26.0
San Juan	3,036	100	21.0	18.0
Sanpete	5,589	55	7.1	20.2
Sevier	4,647	53	11.5	21.7
Summit	7,786	23	7.4	20.7
Tooele	15,223	40	13.1	23.7
Uintah	8,012	38	19.3	24.8
Utah	135,125	30	11.0	27.1
Wasatch	6,321	33	10.9	22.6
Washington	30,524	45	10.0	24.0
Wayne	490	54	8.5	14.0
Weber	48,586	47	14.3	25.0
Utah State	621,062	38	10.8	25.6

Sources and Definitions

Demographics

All demographics are from the American Community Survey 2010-2014 Estimates, U. S. Census Bureau.

Health

Source - All sources are from the Utah State Department of Health unless otherwise indicated.

Prenatal Care - Number and percent of women receiving prenatal care in the first trimester as a percent of all live births.

Low Birth Weight Babies - Number of infants born weighing less than 2,500 grams (about 5.5 pounds) as a percentage of all live births

Infant Mortality - An infant death is defined as death of a live-born infant within one year of birth. Rates are per 1,000 live births.

Injury Deaths - Child injury deaths are those occurring to individuals ages 1 to 19 due to injuries (accidents, suicides, and homicides). Rates are per 100,000 youth.

Teen Births - Live births to married and unmarried females ages 15 to 17. Rates are per 1,000 females in that age range.

Suicide Deaths - Rate for suicide deaths is per 100,000 ages 10-19.

Uninsured Children - The number and percent of children ages 0-18 with no health coverage. Source - American Community Survey.

Child Abuse - The number is a distinct reported victim count. Victim counts across counties may be duplicated as a victim could have been serviced in more than one county. Rates are per 1,000 population. Source - Utah Department of Human Services, DCFS.

Immunization: By two years of age, it is recommended that all children should have received 4 doses of diphtheria-tetanus-pertussis (DTP), 3 doses of polio, 1 dose of measles-mumps-rubella (MMR), 3 doses of Hepatitis B, 3 or 4 doses of Haemophilus influenzae type B (Hib) (depending on product type received), and 1 dose of Varicella vaccine. This recommendation is referred to in shorthand as "4:3:1:3:3:1." Source - National Immunization Survey, National Center for Health Statistics, U.S. Centers for Disease Control and Prevention and Utah Department of Health

Exemption Rate: exemption percent is for those who choose to opt out of vaccines for medical, religious, or personal reasons and have filed an exemption with their local health department or medical provider. Source: Utah Immunization Program. March 2016. Child Care Annual Summary Report. Retrieved from Utah Department of Health.

Economics

Poverty - The federal poverty threshold for a two parent household with two children was \$23,283 in 2012. If a family makes less than this amount they are considered "in poverty." Source - U.S. Census Small Area Income and Poverty Estimates (SAIPE).

Median Household Income - Median income divides the income distribution into two equal groups, one having incomes above the median and the other having incomes below the median. It includes all income for the entire family. Source - SAIPE.

Unemployment - Seasonally adjusted unemployment rates. Source - Utah Department of Workforce Services (DWS).

TANF & Food Stamp Cases - The number of cases (households) receiving food stamps or TANF at any time during the month indicated. A case is counted once even though there may be several individuals in the household. Source - DWS.

Intergenerational Poverty - Intergenerational poverty is defined as poverty in which two or more successive generations of a family continue in the cycle of poverty and government dependence. Intergenerational poverty does not include situational poverty which is temporary and traceable to a specific incident or time period. Source: Utah Department of Workforce Service, IGP database.

Education

Source - Utah State Office of Education.

Enrollment - Enrollment numbers are for the Fall of each year and represent the number of students enrolled in Kindergarten through 12th grade.

Pupil/Teacher Ratio - Pupil/Teacher ratios are based on the total number of students enrolled in Kindergarten through 12th grade and teachers include any person assigned to the school as a "regular classroom teacher". This excludes preschool teachers and special education teachers, guidance counselors, library specialist, etc.

Free and Reduced Lunch Participation - Data is for Kindergarten through 12th grade and represents the percent of the state's students who are receiving free or reduced lunches. Data is for a point in time enrollment number in October of each year.

Children 3 and 4 Not Enrolled in Preschool - The share of children ages 3 to 4 not enrolled in nursery school or preschool. "Nursery school" and "preschool" include any group or class of institution providing educational experiences for children during the years preceding kindergarten. Places where instruction is an integral part of the program are included, but private homes that primarily provide custodial care are not included. Children enrolled in programs sponsored by federal, state or local agencies to provide preschool education to young children--including Head Start programs--are considered as enrolled in nursery school or preschool.

Source - Population Reference Bureau, analysis of data from the U.S. Census Bureau, 2011-13 three-year American Community Survey.

SAGE (Student Assessment of Growth and Excellence) -The SAGE assessments are adaptive, meaning if a student answers questions correctly, the computer provides more challenging questions in order to measure the student's depth of understanding in his or her grade/course content. Similarly, the computer provides questions less challenging within the grade/course content when the student answers incorrectly.

Chronic Absence - Of students with at least 45 days in membership, the percentage that were absent for at least 10% of their days in membership. This is a new definition and makes the data in this year's book not comparable to other year's data.

The KIDS COUNT Data Center

I'm preparing a proposal to start a new mentoring program in my county. I need data to make my case.



All of the Utah KIDS COUNT indicators (including those not published in this report, as well as data from the National KIDS COUNT project) are housed on the Data Center.

From datacenter.kidscount.org you can:

- Rank states, Utah counties, and the 50 largest cities in the U.S.
- Create a customized data profile for your county.
- Generate your own customized maps and trend lines that show how Utah children are faring and use them in presentations and publications.
- Feature maps and graphs on your own website or blog that are automatically updated when new data is uploaded.
- View and share data quickly and easily anytime and anywhere with the enhanced mobile site for smart phones at mobile.kidscount.org.

I'm on deadline and need stats on teen births with compelling graphics for my story.



How can I show people the impact the economic downturn had on youth employment in my community?



We encourage you to use the data to tell the story of your community and bring about positive change. Meeting the health, educational, and social needs of our children is an important task. This data is a necessary tool for all those working with youth, be it advocacy, media, service providers, or policymakers.

Children are a third of our population in Utah and 100% of our future.
Let's make sure KIDS COUNT!



Voices for Utah Children

Voices for Utah Children works to make Utah a place where all children thrive. We start with one basic question: "Is it good for kids?" At Voices for Utah Children, we believe that every child deserves the opportunity to reach his or her full potential. And to achieve this vision, we focus on five key areas that benefit the healthy development of all children. Health, School Readiness, Safety, Economic Stability, and Diversity.

Big wins for kids don't just happen by accident. They happen because of advocacy – when skilled professionals backed by thoughtful funders show policymakers that government can and should act to keep kids safe and help them grow. As a multi-issue child advocacy organization, Voices for Utah Children is making a difference in our kids' lives by raising awareness, influencing policy, and uniting our community. By bringing the power of a community together – legislators, business executives, private funders, government agency representatives, nonprofit directors, and ordinary citizens – we help identify and resolve the tough problems facing Utah's children and families.



KIDS COUNT

KIDS COUNT®, a project of the Annie E. Casey Foundation, is a national and state-by-state effort to track the well-being of children in the United States. By providing high-quality data and trend analysis, KIDS COUNT seeks to enrich local, state and national discussions concerning ways to secure better futures for all children — and to raise the visibility of children's issues through a nonpartisan, evidence-based lens.



Visit us Online:

www.utahchildren.org

facebook.com/UtahChildren



@utchildren



[Voices4UtahChildren](https://www.youtube.com/Voices4UtahChildren)



@utchildren

